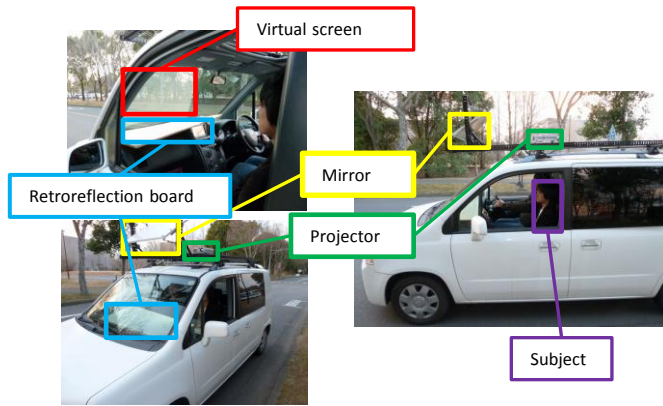
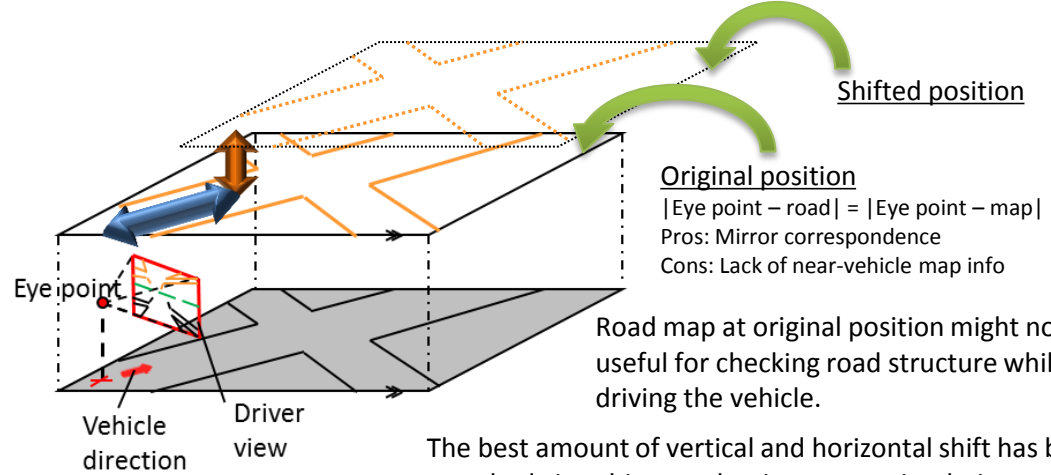


A new road map visualization method at window shield display for vehicle driver is proposed. Road structure ahead of a vehicle is shown by CG line segments at the upper area of driver view in augmented reality fashion by Windshield Display[1].



Windshield Display [1]



The best amount of vertical and horizontal shift has been searched via subject evaluation at two simulation movies.

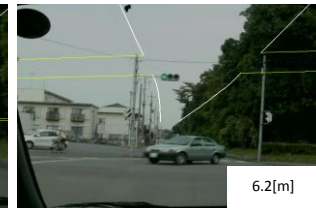


Going straight : Close view seems to be preferred.
 Making right turn : Far view seems to be preferred.

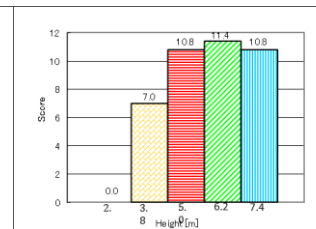
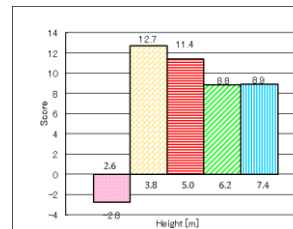
Going straight



Making right turn

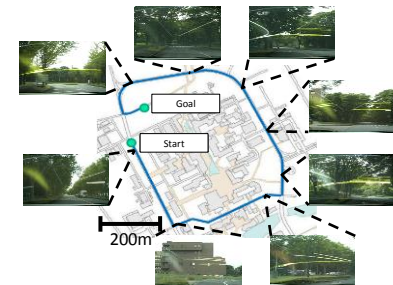


Snapshots of simulation movies



Scores (Scheffe's paired comparison)

Positive comments are obtained through actual 4 min ride by 11 people.



Test route in our campus (open road)



A real snapshot from passenger seat

[1] Sato, Kitahara, Kameda, and Ohta, Visual Navigation System on Windshield Head-Up Display. 13th World Congress on Intelligent Transport Systems, 2006.